

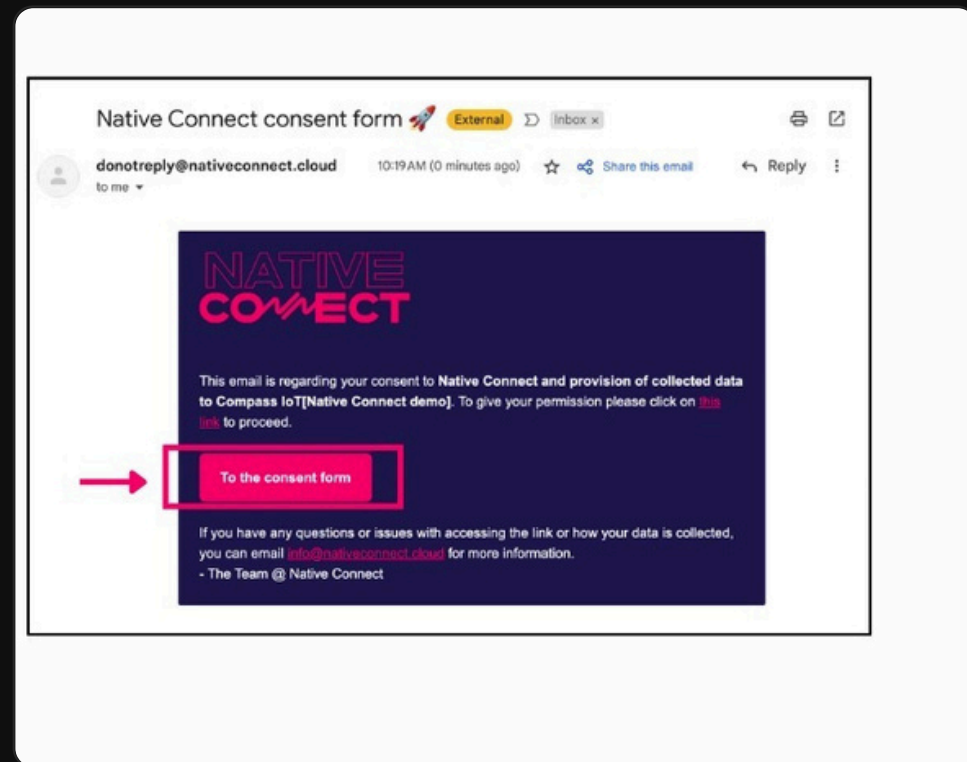
HOW TO ONBOARD TESLA VEHICLES BEFORE 2021

STEP 1

Receive the Native Connect Email

The inputted email will receive an email from Native Connect. Click on the link included in this email. This link will expire after 1 hour.

Please open the link on your mobile or personal laptop and disable pop-up restrictions.



HOW TO ONBOARD **TESLA VEHICLES** BEFORE 2021

STEP 2

Complete the Native Connect Form

Click through to Native Connect where you will be prompted to:

- Fill in your Tesla account username
- Agree to the T&Cs
- Click Submit

The screenshot shows a web browser window displaying the 'Native Connect Vehicle Data Consent' form. The form is titled 'NATIVE CONNECT DATA CONSENT' and includes a 'SUBMIT' button. The form contains the following sections:

- Our Business Verification:** A section for business verification with fields for 'Name', 'Address', and 'Email', and a 'SUBMIT' button.
- Native Connect Terms and Conditions:** A section titled 'NATIVE CONNECT TERMS AND CONDITIONS' with a 'SUBMIT' button.

The form is displayed on a white background with a dark sidebar on the right. The Native Connect logo is visible in the top right corner of the form area.

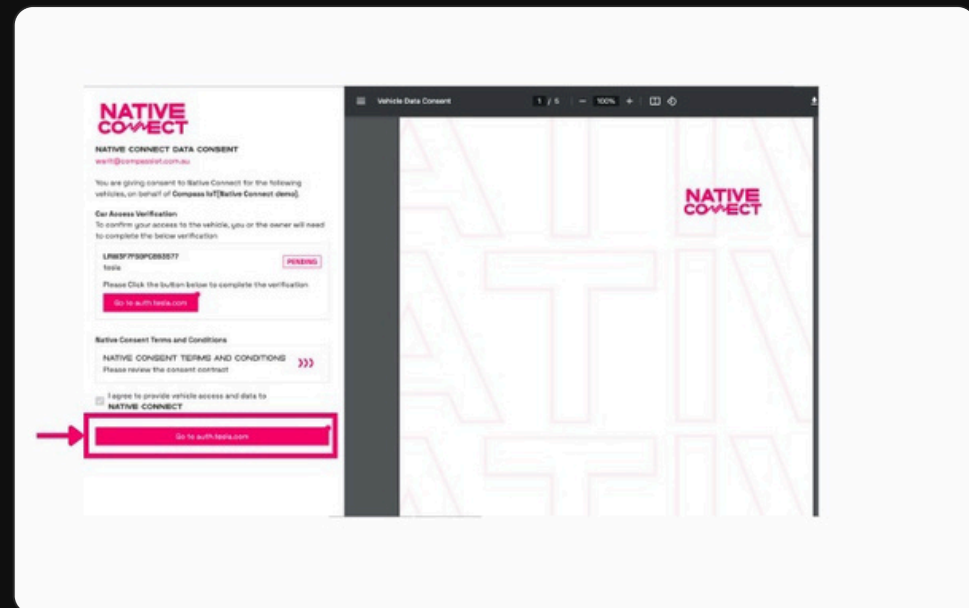
HOW TO ONBOARD **TESLA** VEHICLES BEFORE 2021

STEP 3

Registration Pending — Go to Tesla

Once you've pressed submit, your registration will be labelled as 'Pending'.

To continue, click the 'Go to auth.tesla.com' button.



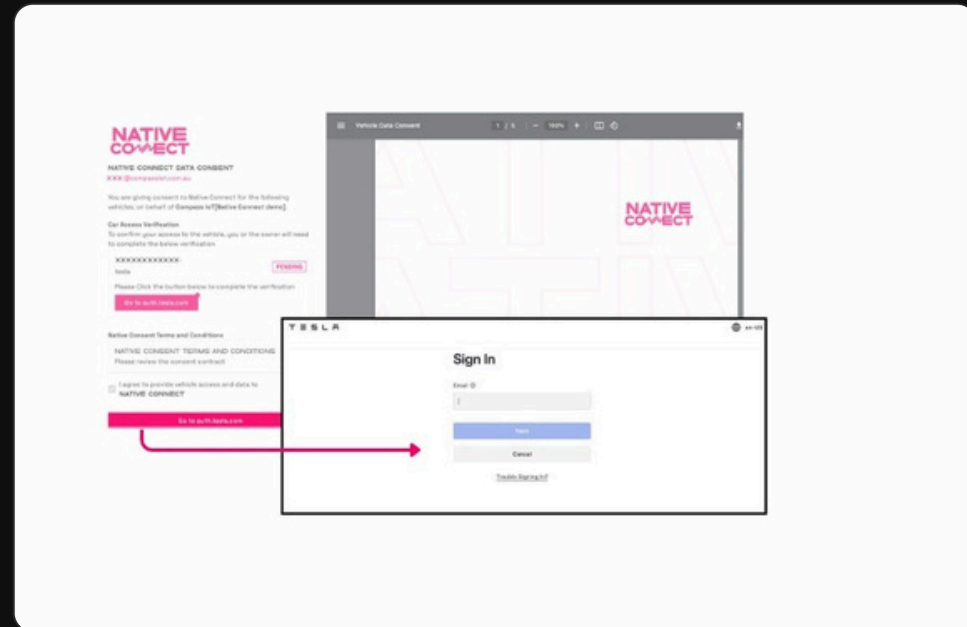
HOW TO ONBOARD TESLA VEHICLES BEFORE 2021

STEP 4

Log In to Your Tesla Account

Pressing the `auth.tesla.com` button will open Tesla's website.

Input your login credentials, including your email and password.



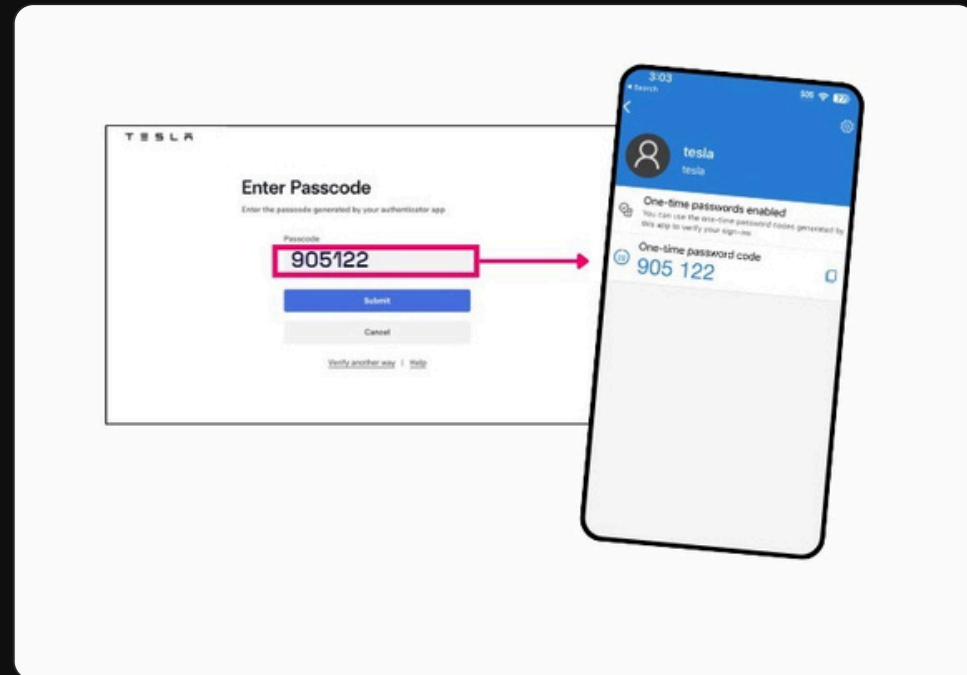
HOW TO ONBOARD TESLA VEHICLES BEFORE 2021

STEP 5

Enter MFA Passcode (If Applicable)

Skip this step if you don't have MFA enabled.

If you have Multi-factor Authentication (MFA) enabled, you'll be prompted to input a one-time passcode. This is received via your Tesla Authenticator App.



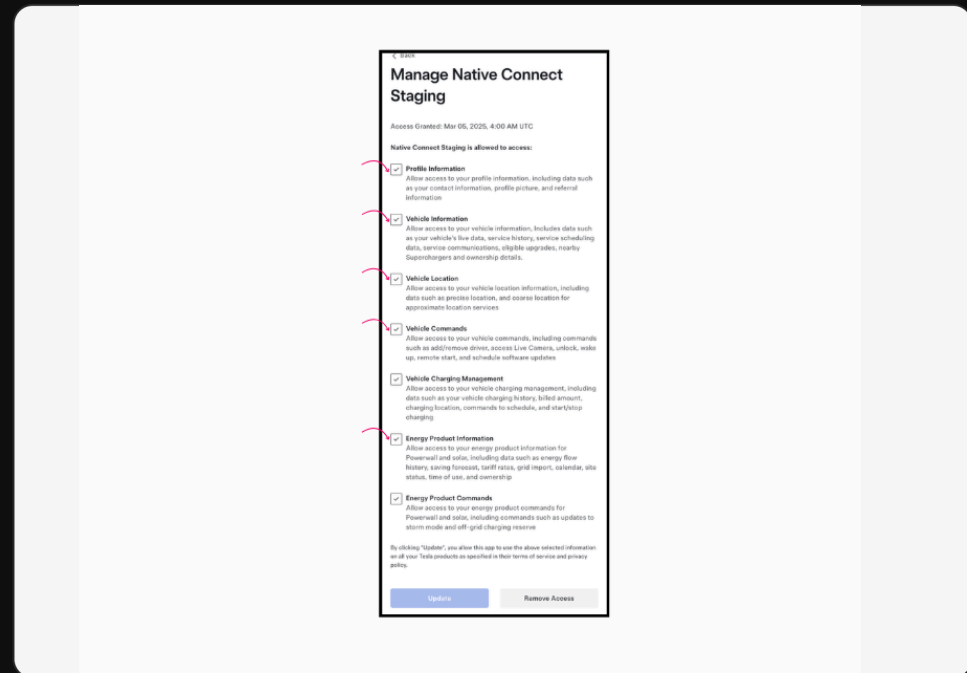
HOW TO ONBOARD TESLA VEHICLES BEFORE 2021

STEP 6

Click through to manage Native Connect access and permissions to your Tesla account.

“Profile Information”, “Vehicle Information”, “Vehicle Location”, and “Energy Product Information” are required. “Vehicle Commands”* is optional.

Once you’ve selected the relevant checkboxes, Press **Allow** to continue.



HOW TO ONBOARD **TESLA** VEHICLES BEFORE 2021

STEP 7

Confirmation Email from Tesla

You will receive an email from Tesla to confirm that you have granted Native Connect access to your account.

